



Teacher Education For Our Changing Times



Greetings from Great Lakes Waldorf Institute!
We are excited to share some of our happenings taking place now and this summer in our teacher training programs

VIRTUAL OPEN HOUSE

We will hold a virtual open house on March 15th
You are invited to join GLWI core faculty and staff to ask questions and learn about our grades 1-8 and early childhood programs

Time: Wednesday, March 15th
6:00 to 7:00 PM CST
Location: Zoom

[Register](#)



New 3-year Cycle Begins this Summer!

Dates: July 3 - 21, Monday through Friday 9:00 AM to 5:00 PM CST

- **July 3-14: ONLINE** - During the first two weeks, classes will be held virtually, with Zoom sessions throughout the day.
- **July 17-21: IN PERSON** - During the third week, classes will be held in person at Prairie Hill Waldorf School in Pewaukee, WI.

Courses

Both Cohorts (Early Childhood and Grades)

Human Development Birth to 21

Artistic Work in Waldorf Schools I

Early Childhood Track

Essentials of a Waldorf Kindergarten

Grades 1-8 Track

Essentials of the Waldorf Grades 1-8 Class Teacher

[Learn More](#)



*In the heart the weaving feeling
In the head the light of thinking
In the limbs the strength of willing*

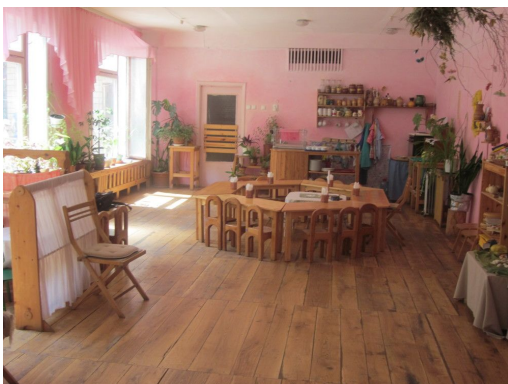
*Weaving enlightening
Strengthening weaving
Enlightening Strengthening*

Lo! This is the Human Being

~Rudolf Steiner

In our current spring course we are delving into the topic of social artistry and human relationships. In these changing times, how are we working together to build community? What are best practices for setting up systems of mutual support? How can these practices inform and strengthen relationships with ourselves, colleagues, students and our wider community.

TEACHER EDUCATION PROGRAMS



Early Childhood
Waldorf Certificate



Grades 1-8
Waldorf Certificate

[Learn More](#)

[Learn More](#)



Master's Degree with
Early Childhood and Grades

[Learn More](#)

SCHOLARSHIPS

We recognize that education can be expensive, and want to do everything we can to support our students. To that end, [financial aid and scholarships](#) are available.

As these are new programs, the funds are modest and we hope to provide more in the future. If you are interested in applying for any of our scholarships or financial aid you can find more information [here](#).

If you would like to help us expand our giving capabilities, please go [here](#) to learn more about how you can contribute.

Giving to GLWI

Visit our Website

Great Lakes Waldorf Institute is an independent, not-for-profit adult learning institution offering Waldorf teacher education programs and professional development, as well as general interest courses on Waldorf teaching, Waldorf Education and the arts.





Our mailing address:

Ed Dept, Mount Mary University
2900 N Menomonee River Pkwy
Milwaukee, WI 53222

Visit our Website

admin@greatlakeswaldorf.org

Tel: 414-299-3820