



Teacher Education for the Future



Artwork by Emily Smith, GLWI Waldorf Certificate and Master's Degree Candidate

CONGRATULATIONS GLWI!

We are proud to announce our new status as a **Full Member Institute** with the Association of Waldorf Schools of North America! This recognizes the strength of our program and greater impact on the wider Waldorf education community.

SUMMER INTENSIVE 2022

July 5 - July 22, 2022

Weeks 1&2: Virtual

Week 3: In person. Location: Milwaukee, WI (exact location TBA)*

Classes require full-time immersion, both virtually and in person, with 8+ hours of active learning every Monday through Friday.

Courses

Child Development and Child Study

Topics include child development and the twelve senses as they apply to the stages of development, from early movement to more sophisticated operations in brain integration. Teaching strategies that accommodate educational support and assessment will also be covered.

Artistic Work in the Waldorf School III

Topics include deepening hands-on experience with modeling in anatomy and embryology, as well as doll making; plant dyeing; calligraphy; and artistic work in the study of botany, human and animal; anatomy and physiology; embryology; and human fertility.

Early Childhood: Deepening Work in Kindergarten & Preparing Children for First Grade

Topics include sensory integration; classic signs of sensory integration, dysfunction and over-stimulation; reflex maturation, assessment and incorporation; motor proficiency and developmental profiles of the young child; and useful examples of movements to remediate.

Teaching Science in the Waldorf School

An overview of the Waldorf science and nature curriculum, grades 1-8. Topics include hands-on work in geology, light, acoustics, electricity, magnetism, simple machines, gravity, and motion.

Learn more about our Summer Intensive and how to register* [here](#).

**In order to register for our courses, you must already have applied and been accepted into the GLWI program.*

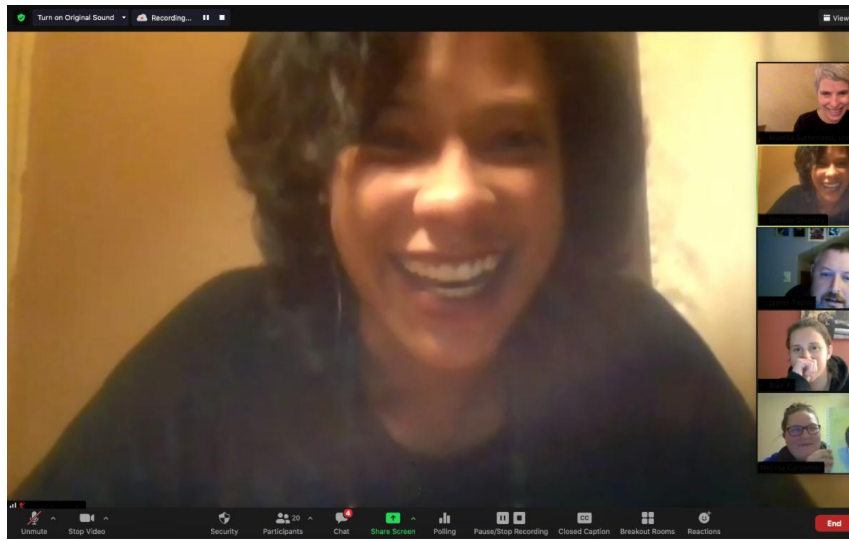


Welcome Amber Chavez!

We are happy to welcome [Amber Chavez](#) to our administrative team. Amber is deeply committed to strengthening the equity work within Waldorf education and leading GLWI with a renewed vision to meet the social impulses of our times. Her Waldorf classroom experience ranges from infants to seventh grade. Amber is dedicated to social justice and earned her B.S. in Early Childhood Education and M.S. in Cultural Foundations of Community Engagement and Education from UW-Milwaukee.

Reconsidering Virtual Learning to Meet the Evolving Future of Waldorf Education

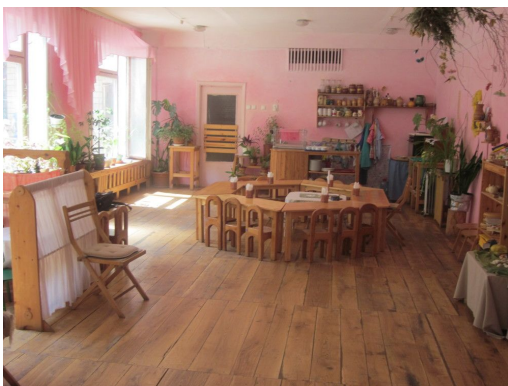
by Simone Shurney



GLWI faculty [Simone Shurney](#) has written an insightful article on the opportunities for innovation and creativity presented when we were unexpectedly confronted with pivoting to virtual learning. At GLWI, we have been delivering our coursework virtually for the past two years and while we are looking forward to returning to in-person courses this summer, we have discovered countless silver linings in navigating this new format. Many of these are beautifully articulated in Simone's article published in AWSNA *School Renewal* magazine.

[Read article](#)

Programs



Early Childhood
Waldorf Certificate

[Learn More](#)



Grades 1-8
Waldorf Certificate

[Learn More](#)



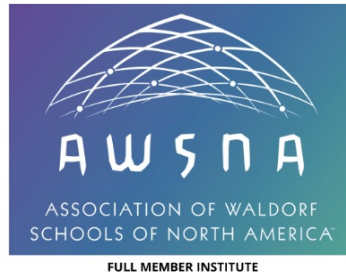
Master's Degree with
Early Childhood and Grades

[Learn More](#)

Giving to
GLWI

Visit our
Website

Great Lakes Waldorf Institute is an independent, not-for-profit adult learning institution offering Waldorf teacher education programs and professional development, as well as general interest courses on Waldorf teaching, Waldorf Education and the arts.



FULL MEMBER INSTITUTE

